

HOW TO TAKE CARE OF BOX TURTLE



The care sheet of an box turtle revolves around **4 basic things**. Such as,

1. PROPERLY EQUIPPED ENCLOSURE

SIZE: 75 gallon or 40 gallon tanks are suitable for box turtles. In other terms, 36*12 inches enclosures are the best for a single box turtle.



UV SOURCE: Box turtles need UV lights to survive. Direct UV rays are more beneficial than artificial ones.

HEAT LAMP: The box turtle can not regulate its body temperature. That is why it needs an external source to provide heat.

HEAT ROCK: Heat rock provides heat to the bellies of the box turtle.

ACCESSORIES: Box turtles often get stressed out or anxiety. At that time, they need some space and alone time. So a hiding spot can a great help for them.

FOR OUTDOOR HABITAT:

- For raising multiple box turtles, outdoor habitat is best.
- Make sure that no predators can attack your box turtle.
- Fill the pool with fresh water.
- Logs around the pool are important as the box turtles use it as a basking area.

2. ENVIRONMENT

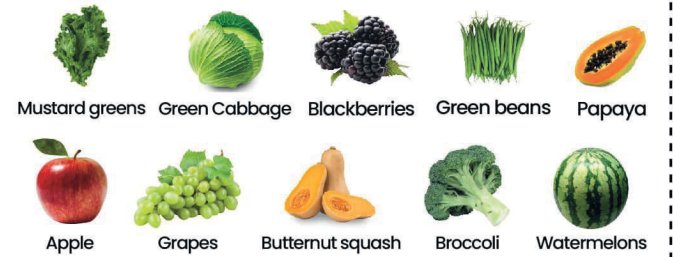
Indoor box turtles do not get much heat or sunlight. If you are keeping your box turtle in low temperatures, it will slow down its work and normal activities.

TEMPERATURE AND HUMIDITY FOR BOX TURTLE:

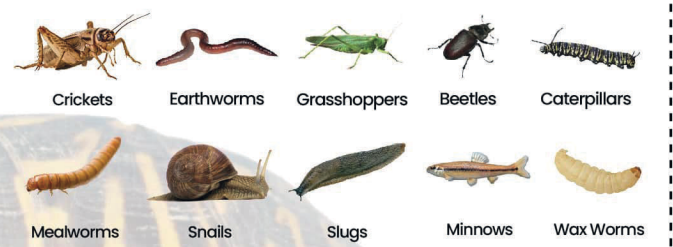
Species	Day Time Temperature	Night Time Temperature	Humidity
Eastern Box Turtle	70-75°F (21-24°C)	65-70°F (18-21°C)	Around 60%
Ornate Box Turtle	70-90°F (21-32°C)	65-75°F (18-24°C)	Around 40%
Three Toed Box Turtle	70-75°F (21-24°C)	65-70°F (18-21°C)	Around 60%
Florida Box Turtle	70-90°F (21-32°C)	65-75°F (18-24°C)	Around 40%

3. DIET

• LIST OF FRUITS AND VEGETABLES FOR BOX TURTLE



• LIST OF FRUITS AND VEGETABLES FOR BOX TURTLE



4. HEALTH

COMMON DISEASES BY WHICH A BOX TURTLE SUFFER:

DISEASE	CAUSE	CURE
Scratch	Accident or attack	Clean the cut with diluted chlorhexidine or a weak, diluted betadine solution.
Fly on skin	Open skin or severe wounds	Clean the area with disinfectant and apply antibiotic ointment
Irregular shell growth	Metabolic bone disease	Proper diet and sunlight
Shell rot	Fungus or bacteria	Keep the box turtle clean and put an antibiotic on the rot.
Swollen Eyes	Vitamin A	Provide the box turtle proper diet, and soak its eyes with antibiotics